

NEW CLIENT WELCOME PACK (NEUROLOGY)

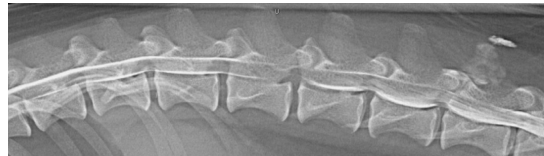
Welcome to Southern Counties Specialists.

You have been referred by your own vet to see one of our neurologists.

Southern Counties Veterinary Specialists is an established referral veterinary practice offering a number of specialist services.

In 2008, we moved into new purpose built premises at Ringwood, between Bournemouth and Southampton, only 10 miles from the southern end of the M3.

Our highly skilled and dedicated team is here to help vets and pet owners with all kinds of problems – from the more straightforward to the most complex. We have the facilities and the trained staff to help.



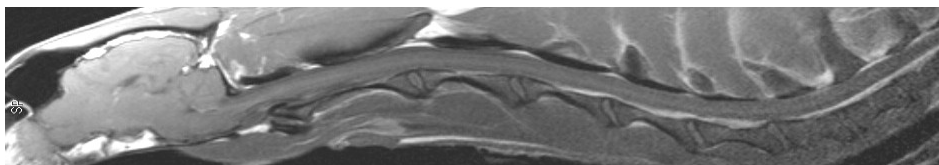
Above: myelogram of a dog's spine showing cord compression (contrast is injected around the spine and an xray is taken).

Left: Dachshunds are commonly affected with intervertebral disc disease.

Right: specialist surgeons are on hand to deal with surgical conditions.

Left: our on-site CT scanner can provide us with 3-dimensional images of the body.

Below: an MRI scan of a dog's brain and spinal cord.



An appointment has been made for you and your pet:

| | |
|-------------|--|
| Neurologist | |
| Date | |
| Time | |

We hope this pack answers any queries you may have.
 Please feel free to contact us if have any questions.

**Southern Counties
 Veterinary Specialists**

6 Forest Corner Farm
 Hangersley
 RINGWOOD
 Hampshire
 BH24 3JW

Telephone: 01425 485615
 Facsimile: 01425 480849

NEW CLIENT WELCOME PACK (NEUROLOGY)

KATIA MARIONI-HENRY DVM PhD DipACVIM(Neurology) DipECVN MRCVS

Katia received her degree in veterinary medicine from the University of Parma in 1995. She subsequently completed a PhD in neurology and electrophysiology in Turin followed by a residency in neurology at the University of Pennsylvania.



Katia is an American and European boarded diplomate in neurology and has held several academic posts in the USA including clinical instructor at the University of Missouri and Assistant Professor of Neurology and Neurosurgery at the University of Tennessee. Katia has authored numerous papers on clinical neurology and is a nationally and internationally recognised specialist in her field.

She is actively involved in continuing professional development, having taught at all levels during her time in the USA. She is a neurology consultant for VIN (Veterinary Information Network), an American-based electronic resource for veterinarians, and was also involved in the production of the DVD "Neurological Examination of the Dog" marketed by Improve International Ltd.



One of our operating theatres with operating table, anaesthetic machine, two arthroscopy/endoscopy towers and anaesthetic monitoring equipment.

**Southern Counties
Veterinary Specialists**

6 Forest Corner Farm
Hangersley
RINGWOOD
Hampshire
BH24 3JW

Telephone: 01425 485615
Facsimile: 01425 480849

NEW CLIENT INFORMATION (NEUROLOGY)

We ask that you do not feed your pet after 10:00pm the evening before the day of your consultation. **Please allow water as usual**

If your pet is on any medication, you should bring it with you. Administer any medication as normal unless we have advised you not to. Please phone us and ask if unsure.

On arrival at SCVS you will meet the specialist for a relaxed consultation in one of our comfortable air conditioned consultation rooms. A thorough history will be taken and a clinical examination performed.

Following the consultation, you may need to leave your pet for diagnostic tests to be carried out. While many results will be obtained later the same day, it may take longer to receive the results of certain diagnostic tests. We will discuss with you whether we wish to hospitalise your pet. This will depend on his/her condition, how long the tests take and your convenience.

Your pet may require sedation or general anaesthesia for diagnostic tests and/or treatment, and this will be discussed with you during the consultation. If blood testing has not been performed recently, we may wish to take a blood sample and run a few general tests prior to sedation or general anaesthesia. This will be discussed with you at the consultation if appropriate.

It may be necessary to repeat some tests or x-rays that your vet has performed. This will depend on the length of time since they were carried out, and the quality of the results.

Please note that non-urgent procedures may not be carried out the same day as the initial consultation. We often need to order specific equipment before we perform procedures and this may take several days. However we do appreciate that many clients travel some distance to see our orthopaedic vets, so we will do all we can to keep any inconvenience to a minimum.

By the nature of our trade, occasionally we see emergency cases which are impossible to plan for. This may mean cancellation/ postponement of less urgent surgery or appointments at short notice even after your pet has been admitted. Please rest assured that we will only do this when absolutely necessary, as we do understand it can be an anxious time for you.

If you have any questions or are concerned in any way please contact us. Our reception team will be able to help with most queries, and aim to make your visit to us as easy as possible for you. They will liaise with the soft tissue specialists over more technical questions.

**Southern Counties
Veterinary Specialists**

6 Forest Corner Farm
Hangersley
RINGWOOD
Hampshire
BH24 3JW

Telephone: 01425 485615
Facsimile: 01425 480849

NEW CLIENT WELCOME PACK (NEUROLOGY)

Fees

| | |
|--|---------------|
| 1 st Consultation | £163.97 + VAT |
| Follow up 2 nd Consultation | £92.40 + VAT |

The cost of investigation and therapy can vary. All fees will be discussed with you during your consultation. We are unable to provide you with an exact quote before your consultation as we have not seen your pet before.

Insurance

Insurance companies will usually pay for all investigation and treatment. However, your insurance company will not discuss your policy with us, so it is your responsibility to check your pet is covered before he/she has treatment.

We regret we are unable to deal direct with your insurance company. In the majority of cases, we require our fees to be settled in full when you collect your pet.

Please bring a completed/signed claim form with you on the day, and we will undertake to complete and forward within 5 working days.

Please note, your pet is being seen as a referral from your usual veterinary surgeon and as such Southern Counties Veterinary Specialists will only carry out procedures which are related to this referral, and will be unable to treat other conditions, or other pets unrelated to the referral except in an emergency.

There is often a waiting list for this referral service. If you are unable to keep your appointment for any reason please contact our reception team as soon as possible to re-arrange

We look forward to seeing you soon.

**Southern Counties
Veterinary Specialists**

6 Forest Corner Farm
Hangersley
RINGWOOD
Hampshire
BH24 3JW

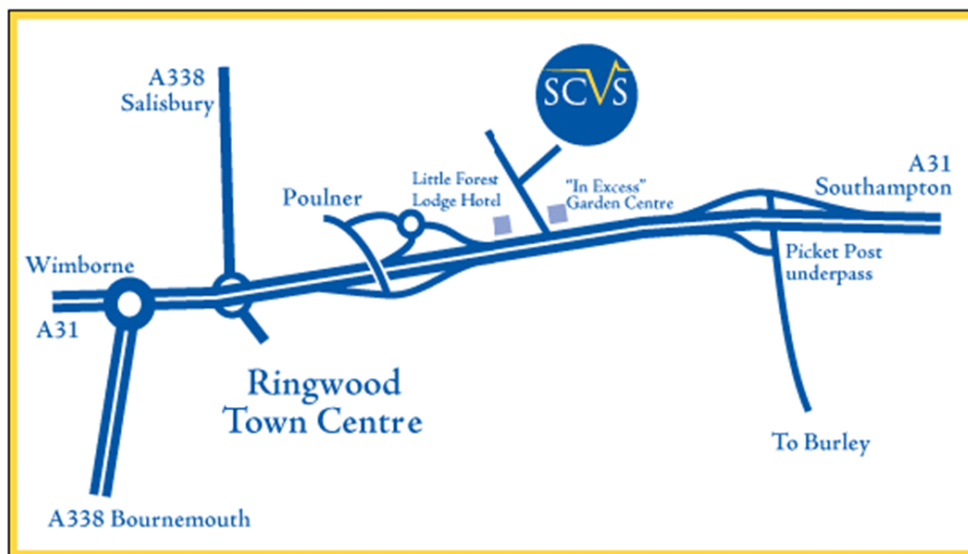
Telephone: 01425 485615
Facsimile: 01425 480849

SOUTHERN COUNTIES VETERINARY SPECIALISTS

FOREST CORNER FARM, HANGERSLEY HILL, RINGWOOD, HAMPSHIRE, BH24 3JW
TELEPHONE 01425 485615 FACSIMILE 01425 480849



HOW TO FIND US



From the East:

Approach via M27 Southampton and onto the A31.

Go past the Picket Post underpass with the Shell garages either side of the motorway.

Continue down the hill and take the next slip road left signposted to Poulner.

At the mini roundabout turn right and go over the motorway bridge.

Take the next exit right and at the roundabout go straight over and re-join the A31.

Continue up the hill and take the next slip road left signposted to Hangersley.

In-Excess garden centre will be ahead of you as you turn left.

Continue down the road as it bears left. Forest Corner Farm is the next right hand turn signposted SCVS on the fence.

Go over 2 speed bumps and our car park is directly in front of you, with the entrance to reception on the left.

From the North:

Approach via the A338 from Salisbury.

At the Ringwood roundabout take the 1st exit left onto the A31, signposted to Southampton.

Continue up the hill

Take second slip road on your left signposted to Hangersley.

In-Excess garden centre will be ahead of you as you turn left.

See approach from the east for directions from here.

From the West:

Approach via the A31 from Dorset.

Stay in the outside 2 lanes and go past the Ringwood town centre turnoff.

Continue up the hill

Take second slip road on your left signposted to Hangersley.

In-Excess garden centre will be ahead of you as you turn left.

See approach from the east for directions from here.

**Southern Counties
Veterinary Specialists**

6 Forest Corner Farm
Hangersley
RINGWOOD
Hampshire
BH24 3JW

Telephone: 01425 485615
Facsimile: 01425 480849