

SOUTHERN COUNTIES VETERINARY SPECIALISTS

FOREST CORNER FARM, HANGERSLEY HILL, RINGWOOD, HAMPSHIRE, BH24 3JW
TELEPHONE 01425 485615 FACSIMILE 01425 480849



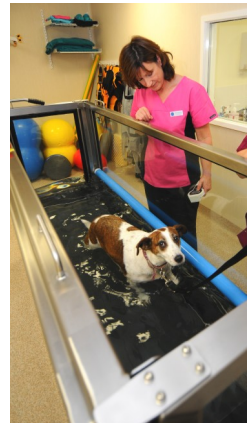
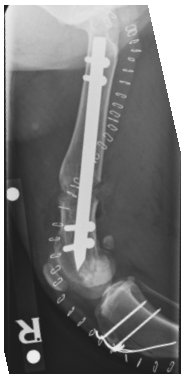
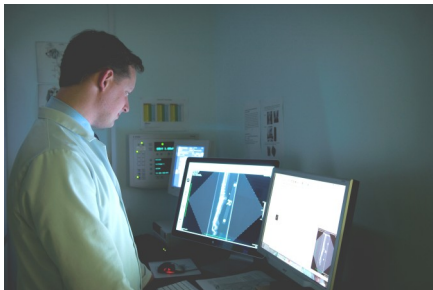
NEW CLIENT WELCOME PACK (ORTHOPAEDICS)

**Welcome to Southern Counties Veterinary Specialists.
You have been referred by your own vet to see one of our orthopaedic surgeons.**

Southern Counties Veterinary Specialists is an established multi-disciplinary veterinary referral practice offering a number of specialist services.

In 2008, we moved into new purpose built premises at Ringwood, between Bournemouth and Southampton, only 10 miles from the southern end of the M3.

Our highly skilled and dedicated team is here to help vets and pet owners with all kinds of problems – from the more straightforward to the most complex. We have the facilities and the trained staff to help.



An appointment has been made for you and your pet:

Surgeon	
Date	
Time	

We hope this pack answers any questions you may have.
Please feel free to contact us if you have any queries.

**Southern Counties
Veterinary Specialists**

6 Forest Corner Farm
Hangersley
RINGWOOD
Hampshire
BH24 3JW

Telephone: 01425 485615
Facsimile: 01425 480849

NEW CLIENT WELCOME PACK (ORTHOPAEDICS)

Harry Scott BVSc, CertSAD, CBiol, MIBiol, DSAS(Orth), FRCVS

Harry graduated from the University of Liverpool. Whilst working at the PDSA he developed interests in both orthopaedics and dermatology culminating in RCVS Certificates in both disciplines. He was a founding partner of the Godiva Veterinary Referral Centre in Coventry. Harry became a fellow of the Royal College of Veterinary Surgeons by examination in canine spinal surgery in 1992, and in 1999 he obtained the RCVS Diploma in Small Animal Surgery (Orthopaedics). Harry is an RCVS recognised specialist in orthopaedics. He has authored a number of scientific papers and co-authored an orthopaedic textbook. Harry lectures regularly to veterinarians in the UK.



Tony Ryan MVB CERT SAS MRCVS



After graduating from University College Dublin in 1996, Tony worked in mixed practice in Ireland, before moving to a small animal practice in the New Forest. Following an internship at the Animal Health Trust, he completed a surgical residency at the Royal (Dick) School for Veterinary Studies in Edinburgh and obtained the RCVS Certificate in Small Animal Surgery in 2005. Until recently Tony has been working as a clinician in soft tissue surgery at Liverpool Veterinary School. He is currently studying for his European Diploma in Small Animal Surgery.

One of our operating theatres with operating table, anaesthetic machine, two arthroscopy/endoscopy towers and anaesthetic monitoring equipment.



**Southern Counties
Veterinary Specialists**

6 Forest Corner Farm
Hangersley
RINGWOOD
Hampshire
BH24 3JW

Telephone: 01425 485615
Facsimile: 01425 480849

NEW CLIENT INFORMATION (ORTHOPAEDICS)

Please **do not feed your pet after 10:00pm the evening before** the day of your consultation. **Please allow water as usual.**

If your pet is on any medication you should bring it with you. **Administer medication as normal** on the day before your appointment unless we have advised you not to. Please phone us and ask if unsure.

What to expect on the day of your consultation:

For your consultation you will normally be met initially by a veterinary intern who will take a thorough history and perform a general examination of your pet. Our interns are qualified vets who work with the specialists at SCVS (a one-year position) to train specifically in small animal surgery. The intern will summarise the history and initial findings for the surgeon who will then continue your consultation. At the end of the consultation the surgeon should be able to give a list of potential diagnoses and a plan for further diagnostic investigation and treatment.

Following the consultation, you may need to leave your pet at SCVS for diagnostic tests. Some results may be obtained later the same day while others may take longer.

Sedation or general anaesthesia may be required for certain diagnostic tests (e.g. x-rays) and/or treatment, and this will be discussed with you during the consultation. If blood testing has not been performed recently, we may wish to take a blood sample for general health screening prior to sedation or general anaesthesia. This will be discussed with you during the consultation if appropriate.

It may be necessary to repeat some tests (commonly x-rays) that your vet has performed. This will depend on the length of time since they were carried out and the quality of the results.

Please note that non-urgent procedures may not be carried out the same day as the initial consultation. We may need to order specific equipment for certain procedures and this can take several days. Furthermore, there is a limit to the number of procedures we can perform in one day. However, we do appreciate that many clients travel some distance to see our specialists, and we will do all we can to keep any inconvenience to a minimum.

By the nature of our trade, occasionally we see emergency cases which are impossible to plan for. This may mean cancellation/ postponement of less urgent surgery or appointments at short notice even after your pet has been admitted. Please rest assured that this will only happen when absolutely necessary.

If you have any questions or are concerned in any way please contact us. Our reception team will be able to help with most queries and will liaise with the orthopaedic vets over more technical questions.

We aim to make your visit to us as positive an experience as possible.

We look forward to meeting you

**Southern Counties
Veterinary Specialists**

6 Forest Corner Farm
Hangersley
RINGWOOD
Hampshire
BH24 3JW

Telephone: 01425 485615
Facsimile: 01425 480849

SOUTHERN COUNTIES VETERINARY SPECIALISTS

FOREST CORNER FARM, HANGERSLEY HILL, RINGWOOD, HAMPSHIRE, BH24 3JW
TELEPHONE 01425 485615 FACSIMILE 01425 480849



NEW CLIENT WELCOME PACK (ORTHOPAEDICS)

Fees

1 st Consultation	£145.84 + vat (£167.61)
2 nd Consultation (follow up)	£92.40 + vat (£106.26)

Overall costs vary depending on the diagnostic investigations required, the duration of surgery and the complexity of procedures performed. All fees will be discussed with you during your consultation.

We are unable to provide an exact quote before your consultation as it is impossible to determine diagnostic and treatment plans without having first examined the animal.

Insurance

Insurance companies will usually pay for all investigation and treatment (with certain provisos). However, your insurance company will not discuss your policy with us, so it is your responsibility to check your pet is covered before he/she has treatment. We usually require our fees to be settled in full when you collect your pet unless pre-authorisation for direct payment has been confirmed with your insurance company. Pre-authorisation can be arranged in certain circumstances (for example elective procedures) where it is possible to produce approximate estimates in advance.

Please bring a completed/signed claim form with you on the day, and we will undertake to complete and forward the form within 5 working days.



Please note, your pet is being seen as a referral from your usual veterinary surgeon and as such Southern Counties Veterinary Specialists will only carry out procedures which are related to this referral. We will be unable to treat other conditions, or other pets, unrelated to the referral except in an emergency.

There is often a waiting list for this referral service. If you are unable to keep your appointment for any reason please contact our reception team as soon as possible to re-arrange.

**Southern Counties
Veterinary Specialists**

6 Forest Corner Farm
Hangersley
RINGWOOD
Hampshire
BH24 3JW

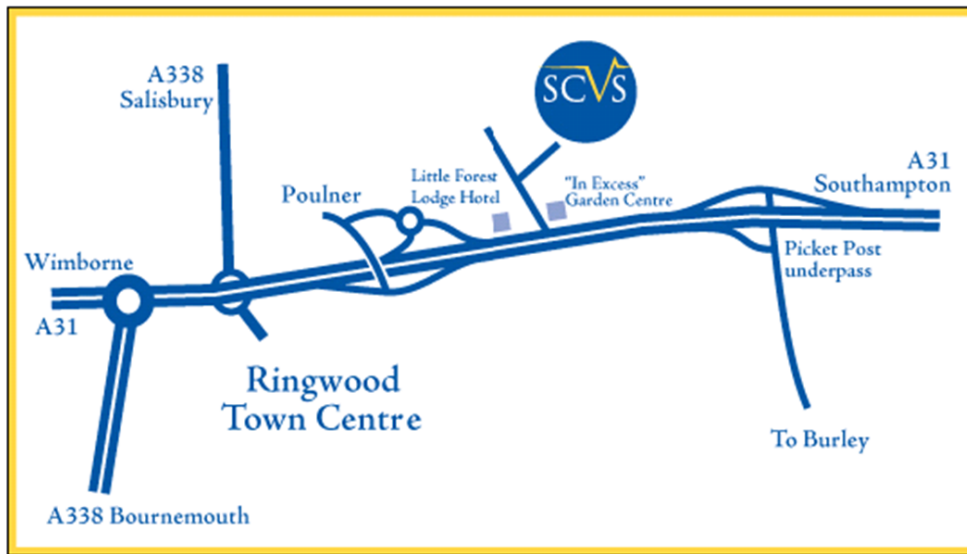
Telephone: 01425 485615
Facsimile: 01425 480849

SOUTHERN COUNTIES VETERINARY SPECIALISTS

FOREST CORNER FARM, HANGERSLEY HILL, RINGWOOD, HAMPSHIRE, BH24 3JW
TELEPHONE 01425 485615 FACSIMILE 01425 480849



HOW TO FIND US



From the East:

Approach via M27 Southampton and onto the A31.

Go past the Picket Post underpass with the Shell garages either side of the motorway.

Continue down the hill and take the next slip road left signposted to Poulner.

At the mini roundabout turn right and go over the motorway bridge.

Take the next exit right and at the roundabout go straight over and re-join the A31.

Continue up the hill and take the next slip road left signposted to Hangersley.

In-Excess garden centre will be ahead of you as you turn left.

Continue down the road as it bears left.

Forest Corner Farm is the next right hand turn signposted SCVS on the fence.

Go over 2 speed bumps and our car park is directly in front of you, with the entrance to reception on the left.

From the North:

Approach via the A338 from Salisbury.

At the Ringwood roundabout take the 1st exit left onto the A31, signposted to Southampton.

Continue up the hill

Take second slip road on your left signposted to Hangersley.

In-Excess garden centre will be ahead of you as you turn left.

See approach from the east for directions from here.

From the West:

Approach via the A31 from Dorset.

Stay in the outside 2 lanes and go past the Ringwood town centre turnoff.

Continue up the hill

Take second slip road on your left signposted to Hangersley.

In-Excess garden centre will be ahead of you as you turn left.

See approach from the east for directions from here.

**Southern Counties
Veterinary Specialists**

6 Forest Corner Farm
Hangersley
RINGWOOD
Hampshire
BH24 3JW

Telephone: 01425 485615
Facsimile: 01425 480849